

Development of built-up area in relation to population development in China

Ratio of the annual percentage change of built-up area and population change between 1990 and 2014

with an increase of built-up area by declining population

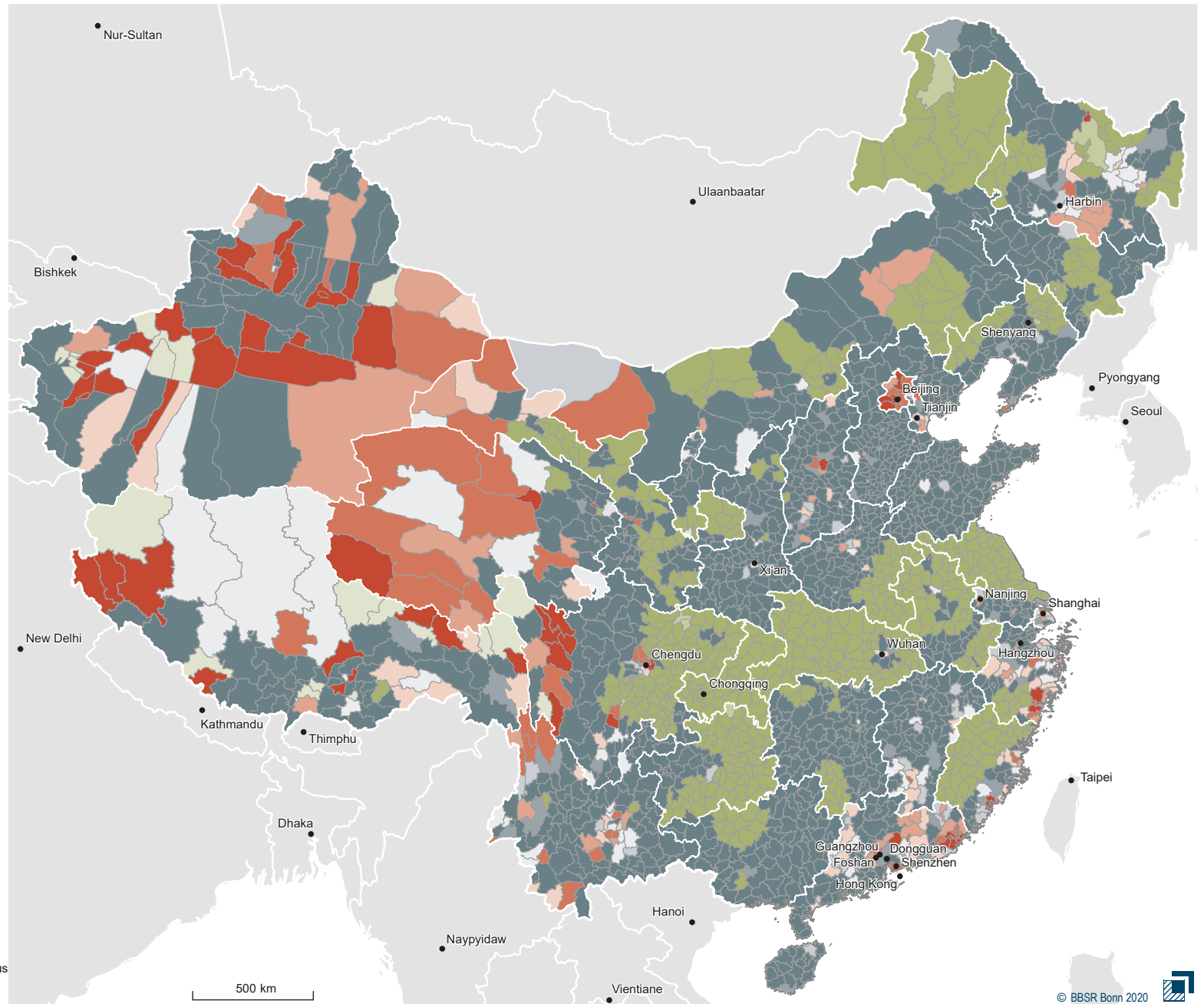
- up to below -1.0
- -1.0 up to below -0.5
- -0.5 up to below 0.0

with an increase of population higher than the increase of built-up area

- 0.0 up to below 0.25
- 0.25 up to below 0.5
- 0.5 up to below 0.75
- 0.75 up to below 1.0

with an increase of built-up area higher than the increase of population

- 1.0 up to below 1.25
- 1.25 up to below 1.5
- 1.5 up to below 1.75
- 1.75 and more



Source: Spatial Monitoring System for Europe
 Origin of data: Global Human Settlement Layer
 Administrative data: GADM, ESRI
 Territorial units: district level (districts, independent cities, city districts, banners, autonomous districts, autonomous banners)
 Author: V. Schmidt-Seiwert